

PHOTOGRAPHS



Photo 1. View north showing the paved parking lot located in the northeast section of the Palisade Point project area (Block A).



Photo 2. Historic view c. 1906 of sugar refining mill and steep bank along Hudson River prior to modern filling near Block A facing north. Photo from the New York Public Library Digital Gallery.



Photo 3. View from the northwest corner of Block A facing southeast along the statue garden and path located between the paved parking lot and the Hudson River within Block A. Modern riprap lines the shore along the park.



Photo 4. View southwest from the southern end of the paved parking lot within Block A showing mounds of rubble. The entire southern portion of the block contains mounds of rubble, which might have been pushed to the end of the block when the northern portion was remediated.



Photo 5. Circa 1946 aerial image of the City of Yonkers facing west. All or part of blocks A-E, G, L, and K are visible. Photo from Central National Bank of Yonkers 1946, end page.



Photo 6. View from the northwestern end of Block B looking east toward Block C along the covered location of the Saw Mill River. Larkin Plaza Park occupies the western end of Block C, while a paved parking lot, seen in the background, occupies the eastern end of Block B.



Photo 7. Circa 1900 view of Larkin Plaza from Buena Vista Avenue looking east toward Block C. The Saw Mill River is visible in the northern portion of Block B. This photograph was taken in the same approximate location as Photo 6. Photo from Crandell 1954, pg. 59.



Photo 8. 1946 Fairchild Aerial Survey of Yonkers. Larkin Plaza (Blocks B and C) is in the lower right corner. From the New York State Archives Digital Collections.



Photo 9. View from the northeastern end of Block C looking west toward Block B. Dock Street is shown (at right) extending along the northern end of Manor House Park and a paved parking area located in the center of the block.



Photo 10. Circa 1902 view of the City Steam Laundry building at 34-36 Dock Street within Block C looking southwest. The reconstructed factory at the former Reed and Carnrick Chemical Works site and the bottling works are visible to the right of the laundry building. From Yonkers Board of Trade c. 1902, pg. 182.



Photo 11. View east from South Broadway toward the western end of the Cacace Center project area (Block D). The justice center's paved parking lot is visible at the top of the rise. The Yonkers High School complex was once located (c. 1886 to post 1917) within the western section of the block – on the rise in the left side of the photograph. The Baldwin/Waring estate house was once located (c. 1868 to post 1917) within the southwestern end of the block – just past the rise on the right side of the photograph.



Photo 12. Circa 1902 view of the Baldwin/Waring estate house located on South Broadway, within Block D. From Yonkers Board of Trade, c. 1902.



Photo 13. View of the northwest corner of the Block D at the corner of Nepperhan Avenue and South Broadway. Nepperhan Avenue was originally straight and extended through this section. Remains of the stone retaining wall are still visible (right side of photo) within this portion of the project area (Maps 10 and 11).



Photo 14. Circa 1902 view of Yonkers High School at the southeast corner of Nepperhan Avenue and South Broadway in Block D. From Yonkers Board of Trade c. 1902.



Photo 15. East view of the southern portion of Block D from within the terraced parking lot. The northern portion of Block D appears terraced on the 1898 Sanborn map. While it is not clear when terracing occurred within the southern portion of the block, the eastern end of the parking lot seems to follow a natural slope.



Photo 16. Northwestern view of the terraced parking lot within the northern section of Block D. City Hall, located across Nepperhan Avenue from the Cacace Center project area, is visible in the background.



Photo 17. View west toward the steep slope and bedrock outcroppings located along the eastern end of Block D along Guion Street.



Photo 18. View toward the remains of foundation walls located along the northeastern portion of Block D at the corner of Nepperhan Avenue and New Main/Guion Street. A series of two-story structures was constructed into the steep slope during the late-19th century (Maps 9-12). These structures, utilized at least until the mid-20th century, contained small businesses on the ground floors as well as upper-level apartments.



Photo 19. View of the southeastern corner of Block E from the roof of a six-story parking garage located within the center of the block. This photograph shows one of the only unoccupied areas within the block.



Photo 20. View north toward the terraced parking area located at the rear of the Salvation Army building at 110 New Main Street from the roof of the six-story parking garage.



Photo 21. View east toward Blocks F, H, and M from the parking garage located in Block E. Blocks H and M are now contained within the Chicken Island parking lot. The fire department headquarters building (c. 1927), as well as New School Street (c. 1917), is visible.



Photo 22. View south from the corner of Elm and New School Streets towards the gas station and fire department headquarters located within Block F.



Photo 23. View northeast toward Blocks G, K, L, and M from the parking garage located within Block E. The roofs of the single-story, early-20th century structures within Block G are visible in the foreground; the covered Saw Mill River flows behind these buildings.



Photo 24. View west toward Block G (left) from the corner of James Street and Palisade Avenue.



Photo 25. View from the Ann Street bridge over the Saw Mill River east towards the Yonkers Storage Warehouse building at 11-17 Ann Street in Block H between 1886 and 1898. The Waring Hat Manufacturing factory located on James Street in Block G is visible on the left side. From Yonkers Board of Trade c. 1902, pg. 174.



Photo 26. View east towards Blocks H and I from the parking garage located in Block E. New School Street, constructed c. 1917 and visible in the background, elevates gradually as it extends south along the Chicken Island parking lot.



Photo 27. View east toward Block I from the parking garage located within Block E. The 20th century single-story shops fronting along New Main Street are shown in the foreground.



Photo 28. View southeast along the uncovered Saw Mill River within Block I from the Ann Street bridge. Nineteenth century walls, possibly retaining walls or building foundation remains, are visible lining the river.



Photo 29. View west showing the curve of the Saw Mill River and 19th century retaining wall west of Henry Herz Street. A livery and morocco leather factory were located within this area south of the river bend (left side of photo) during the 19th century (Maps 8-10).



Photo 30. View southwest along the northern side of Nepperhan Avenue from Henry Herz Street. Nepperhan Avenue was extended north into the footprints of the late-19th and early-20th century commercial/residential structures fronting Nepperhan Avenue. The rear foundation walls of these structures are currently visible along the right side of the photo.



Photo 31. View northeast toward the center of Block I, located within the Chicken Island parking lot. Nepperhan Avenue (right) and New School Street (background) are elevated above the block within this area.



Photo 32. Eastern view of the northern portion of Block I from New School Street. Single-family homes, tenements, and small businesses once fronted Nepperhan Avenue at the top of the steep slope, while the rear yards were located along the slope. The structure in the background is located at the southern end of Block N.



Photo 33. View west toward Block J, the former location of the Alexander Smith and Sons tapestry weaving mill, located on the west side of the Saw Mill River.

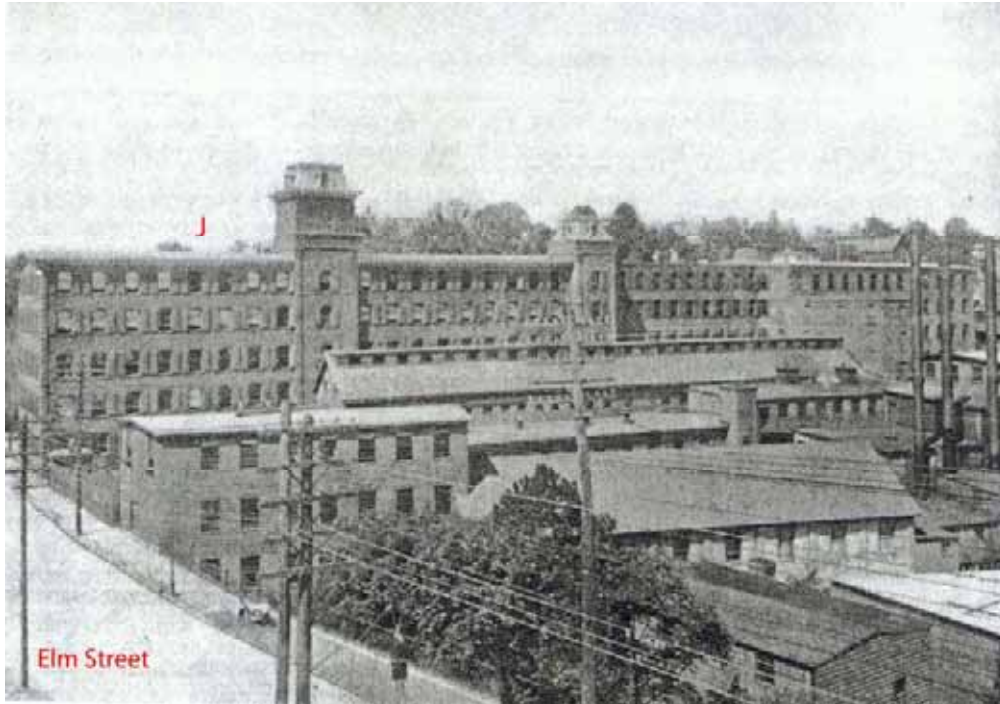


Photo 34. Circa 1896 view northwest toward the Alexander Smith and Sons tapestry weaving mill at the northeast corner of Palisade Avenue and Elm Street within Block J. Photo taken from the same approximate location as Photo 33. From Allison 1984, pg. 358.



Photo 35. View north toward the paved parking area located in the eastern side of Block J. The Alexander Smith and Sons tapestry weaving mill was located here from the mid-19th century until the 1930s. Two 20th century structures, a car repair shop (white building) and a building containing shops, are located within the western side of the block.



Photo 36. View east of Block K from the corner of James Street and Palisade Avenue. Cellar holes and foundation remains are visible on the surface along the entire northern end of this block.



Photo 37. Circa 1902 view south of the fire station at 18 Palisades Avenue, located within Block K. The fire station is in the center of the photo. From Yonkers Board of Trade c. 1902, pg. 141.



Photo 38. Circa 1902 view south of the Women's Institute at 36-38 Palisade Avenue within Block K. From Yonkers Board of Trade c. 1902.



Photo 39. Southern view of the western end of Block N from Elm Street. The Rose, McAlpin and Company leather factory occupied this area from at least 1886 until at least the mid-20th century. The Saw Mill River is visible on the right side of the photo, while a 19th century stone retaining wall is visible on the left.



Photo 40. View east toward an underground vault located along the eastern edge of Block N. The vault is depicted on the 1886 Sanborn map (Map 9) and is surrounded by a 19th century retaining wall.



Photo 41. View west toward the northeastern end of Block N from the Nepperhan Avenue median. The four-story tenement building dates to the late-19th or early-20th centuries, while the single-story commercial structure possibly dates to the mid-19th century.